



The Washington Pavilion 2017 Annual Report



Experience **Your** Washington Pavilion



Our Mission and Vision

The mission of the Washington Pavilion is to inspire, educate, entertain and enrich our region by creating opportunities for all to explore and experience the arts and science. Our vision is to be the region's premier arts and science destination, inspiring lifelong discovery and inclusive experiences.





Table of Contents

4	2017 Board Members	12-14	Visual Arts Center
5	Message from the President & CEO and Board of Trustees Chairperson	15	Acquisitions
6	Washington Pavilion	16-17	Fundraising and Volunteers
7-8	Husby Performing Arts Center	18-28	Thank you!
9-10	Community Learning Center	29-30	Financial Highlights
11	Kirby Science Discovery Center		



2017 Board Members

The leadership and support provided by the individuals who serve as board members for the Washington Pavilion is invaluable. These people are generous with their time and resources beyond expectations.

Board of Trustees

Marcia Chicoine
 Julie Darrington
 Steve Erpenbach
 Jeff Gednalske
 Lizbeth Gullickson
 Angie Haft (Chair)
 Jeff Hurley (Secretary/
 Treasurer)
 Brian Jans
 Beth Jensen
 Michael Jerstad
 Kim Patrick
 Steve Sanford
 W. Tom Simmons
 James Sturdevant
 Julie Ward (Vice-Chair)
 Julie Westra

Mayoral Appointees:

Rich Garry
 Brad Heegel
 Emily Paulson
 Dave Knudson

ExOfficios:

Jim Mathis
 (VAC Chair)
 Rory Kelly
 (HPAC Chair)
 Jill Weimer
 (KSDC Chair)
 Jason Lemke
 (KSDC Chair)

Committee Liaisons:

Julie Ashworth
 (CLC Chair)

Husby Performing Arts Center Advisory Board

John Beranek
 Mike Connor
 Kristin Cooke
 Mary Garry
 (Vice-Chair)
 Arnold Garson
 Jami Gates
 Kristi Geisler Holm
 Liz Gullickson
 Rory Kelly (Chair)
 Amy Lauck
 Carol McGinnis
 Gene McGowan
 James Payer II
 Nicole Plesec
 Patrick Pope
 Kristen Townsend
 Eric Weisser

Kirby Science Discovery Center Advisory Board

Sandra Henry
 Kristy Jackson
 Joni Johnson
 Jason Lemke
 (Chair)
 Rich Naser
 Gavin Plesec
 Peggy Shlanta
 June Thormodsgard
 Jill Weimer
 (Chair)

Visual Arts Center Advisory Board

Melanie Carpenter
 Allison Crawford
 Claudia Dail (Vice-Chair)
 Betty Franklin
 Jeff Holcomb
 Chase Kramer
 Jim Mathis (Chair)
 Rob Nelson
 Jack Paladino
 Lindsay Twa
 Michele Weber

Non-Voting Member:

Tory Stolen,
 Artist Advisory
 Council liaison

Community Learning Center Committee

Julie Ashworth (Chair)
 Sara Crosby
 Vaney Hariri
 Ed Harvey
 Laura Hoffman
 Amy Kimber
 Susan McAdaragh
 Liz McMillan
 June Thormodsgard
 (KSDC)
 Michele Weber (VAC)
 Jennifer White

Finance Committee

Melanie Carpenter
 (VAC)
 Mary Garry (HPAC)
 Angie Haft (BOT)
 Sandra Henry (KSDC)
 Jason Herrboldt
 Jeff Hurley (Chair)
 Kathy Redinius
 Lon Stroschein
 Tracy Turbak (City)
 Julie Ward (BOT)

Development Committee

William L Baker
 Rich Garry (BOT)
 Angie Haft (BOT)
 Michael Jerstad (BOT)
 Tom Simmons (BOT)
 Larry Toll
 Julie Ward (BOT)

Message from the President & CEO and Board of Trustees Chairperson

As we look back on 2017, it was quite possibly the greatest year in the history of the Washington Pavilion of Arts and Science, both programmatically and financially. It was a year of tremendous growth, continued evolution, and exciting transformations. We also established new mission and vision statements, as well as organizational values.

In 2017, this mission was fulfilled in many different and very exciting ways.

The Washington Pavilion's Husby Performing Arts Center introduces audiences to some of the world's greatest performances. Subscriber renewal rates were impressively high, the number of new subscribers continued to grow exponentially over the previous season, and we finished the year at an all-time high in subscribers with more than 2,700 in total. We also set all-time record highs for number of tickets sold to a single show (*Book of Mormon*) and number of single tickets sold in a season for all performances combined.

The Kirby Science Discovery Center experienced a resurgence in 2017 as well. Attendance increased for the first time in nearly five years, as members and patrons alike responded favorably to the opening of *Space: An Out-of-this-World Experience* themed floor in late 2016, in addition to all the other exciting changes and improvements that took place.

The Visual Arts Center was also very active in 2017, with more than 20,000 visitors enjoying our seven galleries. More than 20 individual art exhibitions featured many local and regional artists, as well as installation and video art, and a featured traveling exhibition titled *Above the Fold: New Expressions in Origami*. We continued highlighting our Permanent Collection in two of our galleries, utilizing selections from the more than 1,600 pieces in our Permanent Collection.

During this past year the Washington Pavilion bolstered current partnerships and engaged the community in a variety of educational projects. For example, we are proud of the success of our Community Learning Center (CLC): over 30,000 community members participated in CLC programming in 2017. Our Action Arts and Science Program continued to flourish, serving over 420 students each week in area after-school programs. Our on-site arts and science classes and summer camps served over 2,300 students, with thousands more participating in programs like Off the Fridge, the Science Fair Showcase, and educational birthday party celebrations. The Dakota Academy of Performing Arts (DAPA), with a mission to provide opportunities for young people to excel in the performing arts, had a very successful year with successful performances in the Belbas Theater and throughout the community featuring 500 young actors and musicians who performed for over 17,000 community members at the Pavilion and in area schools.

Funding for the Washington Pavilion is largely dependent upon revenue from admissions and programming as well as the generosity of members, donors and corporations. We provide entertainment and educational opportunities that bring tremendous economic benefit to the community through audiences who spend their money in local restaurants, stores, hotels and other businesses.

Financially, the Washington Pavilion's operating fund concluded the year with an increase in net assets of \$482,000. The Board of Trustees voted to transfer \$340,000 of this fund into the Board Designated Reserve Fund to further strengthen the financial position of the organization.

A growing list of donors and corporate sponsors have provided outstanding financial support and commitment to our mission. Generous grants enable us to reach out to our community in innovative new ways. In 2017, more than 300 volunteers provided thousands of hours to support what we offer. Without the help of these and many other partners, our efforts to enhance our community would not be possible. The Washington Pavilion wants to especially applaud the City of Sioux Falls for its tremendous support as well as the exceptional private/public partnership we are so honored to be a part of. Your Washington Pavilion of Arts and Science has never been stronger than it is today, and we look forward with great enthusiasm to continued growth, success, and widespread regional impact.



Darrin Smith, President & CEO
Washington Pavilion of Arts and Science



Angie Haft, Chair
Washington Pavilion Board of Trustees



Washington Pavilion

The Washington Pavilion is the region's home for the arts, entertainment and science. Located in a beautifully renovated historic building in downtown Sioux Falls, it is one of only a few facilities in the world to bring together under one roof the performing arts, visual arts, interactive science and educational opportunities.

The Washington Pavilion makes art and science part of the daily lives of thousands of people with programming from Broadway tours to intimate chamber recitals in two state-of-the-art theaters in the Husby Performing Arts Center; more than 100 hands-on interactive science exhibits and the Wells Fargo CineDome in the Kirby Science Discovery Center; and regional and national exhibits ranging from South Dakota artists to notable national and international artists in the Visual Arts Center. Additionally, the Washington Pavilion offers quality education through the Community Learning Center and Graham Academy Preschool and delectable delights at Leonardo's Café.



THE WASHINGTON PAVILION SERVES THE COMMUNITY THROUGH SEVERAL OTHER IMPORTANT INITIATIVES:

- On Free First Friday, the first Friday of every month, the Washington Pavilion opens its doors free-of-charge, welcoming more than 8,000 guests throughout the year.
- The Community Learning Center provides educational opportunities for all ages with a broad range of engaging arts and science classes, workshops and internships and no-cost art experiences for at-risk youth and underserved populations weekly during the school year at multiple venues.
- The Graham Academy Preschool offers a unique educational setting for ages 3-5 with need-based scholarships available.
- The Dakota Academy of Performing Arts prepares adolescents and young adults students for professional-level music and theater performances.
- The Events Department provides individuals, groups and businesses with affordable, one-of-a-kind space and services for weddings, conferences, meetings and social gatherings.
- The Washington Pavilion is also home to several cultural partners, including the South Dakota Symphony Orchestra, Sioux Falls Jazz & Blues Society, South Dakota Rock and Roll Hall of Fame and the South Dakota African American History Museum.

With the vast array of high-quality programming and educational activities available at the Washington Pavilion, people of all ages and walks of life can rely upon the organization to inspire, educate, entertain and enrich.

The Washington Pavilion is a private, 501(c)3 not-for-profit organization, serving the community through earned and contributed support.



Husby Performing Arts Center

The world-class Husby Performing Arts Center (HPAC) features the Mary W. Sommervold Hall, the Belbas Theater and the Schulte Room. These state-of-the-art performance facilities are home to the Pavilion Performance Series, the Washington Pavilion's annual presentation of six world-class Broadway performances. In addition, the Washington Pavilion presents numerous additional performances and mission-related performing arts productions. The Husby Performing Arts Center provides the stage for major producers, promoters and organizations to rent facilities at the Washington Pavilion to showcase all that the arts have to offer.

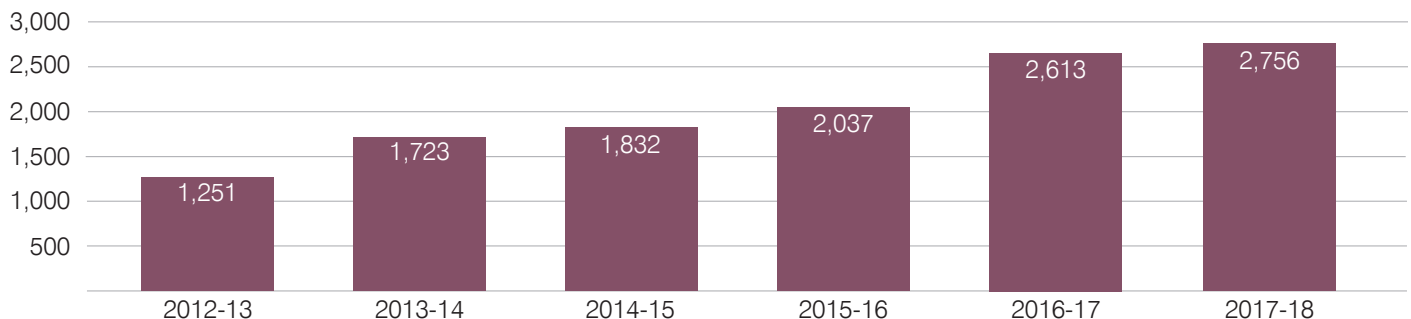
2017 was a very prosperous year for the Husby Performing Arts Center. January started with a mesmerizing production of THE MAGIC OF BILL BLAGG LIVE! and three performances of the hit touring spectacle, STOMP. An incredibly innovative and high-concept production of INTO THE WOODS delighted audiences with two performances over Valentine's Day. March was a very busy month with two energetic performances of MAMMA MIA! and two family-friendly performances of BROWN BEAR, BROWN BEAR AND OTHER TREASURED STORIES, which celebrated the storytelling of Eric Carle. THE BOSTON POPS visited with a phenomenal concert that same month. MATILDA made an extended stop for six performances in March that simply blew audiences away with its technical theatre magic and outstanding production value. April featured two productions that were perfect for families with two school matinee performances of MUFARO'S

BEAUTIFUL DAUGHTERS and a marvelous performance of PEPPA PIG LIVE! Also in April, three performances of RODGERS & HAMMERSTEIN'S CINDERELLA brought the classic tale to life for over 4,000 patrons. May began with seven performances of the Broadway sensation, THE BOOK OF MORMON, which received rave reviews and broke the record for ticket sales at the Washington Pavilion. At the end of May, Derek and Julianne Hough came through Sioux Falls with their incredible dance show, MOVE LIVE ON TOUR. In August, GAELIC STORM tore the house down with their unique musical stylings. The 2017-18 Pavilion Performance Season began with five performances of the award-winning Broadway production of KINKY BOOTS in September and five performances of MOTOWN: THE MUSICAL in October. Both productions were a celebration of music and the power of perseverance. A CHARLIE BROWN CHRISTMAS ended the year, bringing holiday magic to the Washington Pavilion.

Pavilion regional promoters continued to bring in renowned entertainers DANIEL O'DONNELL, SANDY PATTI, KENNY ROGERS, JASON ISBELL and JERRY JEFF WALKER, just to name a few. LORIE LINE, TONIC SOL FA, SHAUN JOHNSON'S BIG BAND EXPERIENCE and THE HEGG BROTHERS selected the Washington Pavilion for their holiday concerts.

The Performance Series' Subscribers continued to grow! In 2017, the number of subscribers reached over 2,750.

Washington Pavilion Performance Series Subscription Sold





Husby Performing Arts Center

2016-17 Pavilion Performance Series Spring Shows

STOMP | January 24-26, 2017

INTO THE WOODS | February 14 & 15, 2017

RODGERS & HAMMERSTEIN'S CINDERELLA | April 7 & 8, 2017

THE BOOK OF MORMON | May 3-7, 2017

2017-18 Pavilion Performance Series Fall Shows

KINKY BOOTS | September 21-24, 2017

MOTOWN: THE MUSICAL | October 27-29, 2017

Presented by the Washington Pavilion

THE MAGIC OF BILL BLAGG LIVE! | January 20, 2017

MAMMA MIA! | March 1 & 2, 2017

BROWN BEAR, BROWN BEAR AND OTHER TREASURED STORIES | March 16, 2017

MATILDA | March 22-26, 2017

THE BOSTON POPS ESPLANADE ORCHESTRA | March 27, 2017

MUFARO'S BEAUTIFUL DAUGHTERS | April 5, 2017

PEPPA PIG LIVE! | April 15, 2017

DEREK AND JULIANNE HOUGH MOVE LIVE ON TOUR | May 25, 2017

GAELIC STORM | August 31, 2017

A CHARLIE BROWN CHRISTMAS | December 17, 2017

Regional Promoters

DANIEL O'DONNELL

SANDY PATTI

KENNY ROGERS

JASON ISBELL

JERRY JEFF WALKER

GARRISON KEILLOR

Holiday Favorites

LORIE LINE

TONIC SOL-FA

SHAUN JOHNSON AND THE BIG BAND EXPERIENCE

THE HEGG BROTHERS

MOSCOW BALLET'S GREAT RUSSIAN NUTCRACKER

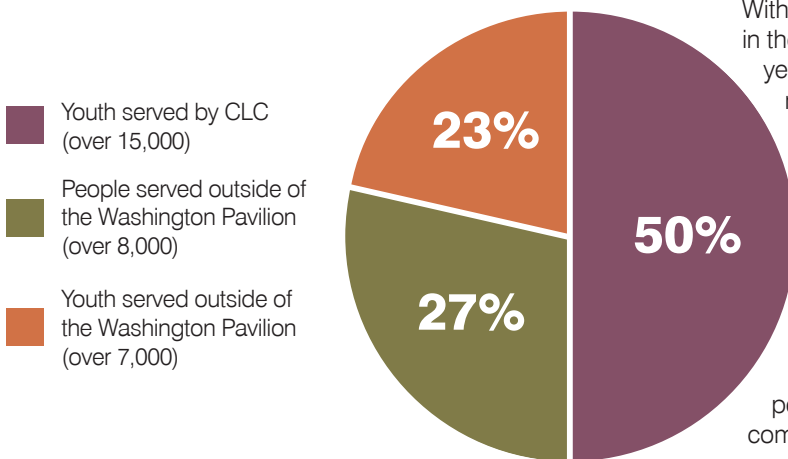


Community Learning Center

The Washington Pavilion's Community Learning Center (CLC) strives to provide outstanding educational opportunities for people in Sioux Falls and the surrounding area through outreach, classes, professional development and special events.

CLC programming reaches a wide cross-section of the region: over 30,000 community members participated in CLC programming in 2017. Over 22,000 of these were youth and over 15,000 people served were engaged outside of the Pavilion's walls through outreach, making the Pavilion a shared experience throughout the wider Sioux Falls community.

Over 30,000 Community Members Participated in Community Learning Center Programming



The Graham Academy Preschool

This preschool program provides for the "whole child" by encouraging exploration and problem-solving skills, creativity and social and emotional growth coupled with the opportunity to interact with Kirby Science Discovery Center exhibits, Visual Arts Center exhibitions and Husby Performing Arts Center programming. Forty-four students attended the Graham Academy Preschool in the 2017-2018 school year.

Internship Program

Seven interns served at the Washington Pavilion in 2017, providing over 1,400 hours of service-learning to the Washington Pavilion.

Arts and Science Classes, Workshops and More

- Classes and camps were offered in the fall, spring and summer, serving over 2,300 youth participants.
- Classes offered through the Osher Lifelong Learning Center (OLLI) reached 395 area seniors.
- Birthday parties led by Washington Pavilion staff served over 1,000 young guests.

The Dakota Academy of Performing Arts (DAPA)

With a mission to provide opportunities for young people to excel in the performing arts, the DAPA Music Institute offered a school year and summer Chamber Music program as well as a joint music summer camp with the South Dakota Symphony Youth Orchestra. The DAPA Youth Theatre Institute featured an expanded season with performances of CHARLOTTE'S WEB, JUNIE B. JONES THE MUSICAL, SEUSSICAL, JR. and the regional premiere of A CHRISTMAS STORY: THE MUSICAL. Summer camp theatre opportunities included THE NOBLE GNARBLE, SPACE PIRATES, ALADDIN JR. and ROMEO AND JULIET as well as THE DROWSY CHAPERONE in partnership with Augustana University.

Six plays from the Plays for Living Theatre Company were performed as outreach events throughout schools and community centers in the Sioux Falls region.

- Over 500 young performers participated in DAPA programs at the Washington Pavilion in 2017.
- Students from the DAPA program brought performances to over 17,000 audience members (over 8,000 audience members were area youth from school outreach performances).



Community Learning Center

Performing Arts Opportunities and Outreach

Through Performance Insights, outreach events and master classes with professional performers appearing on the Mary W. Sommervold Hall stage, the CLC strives to provide high-quality performing arts education to participants of all ages and experience levels.

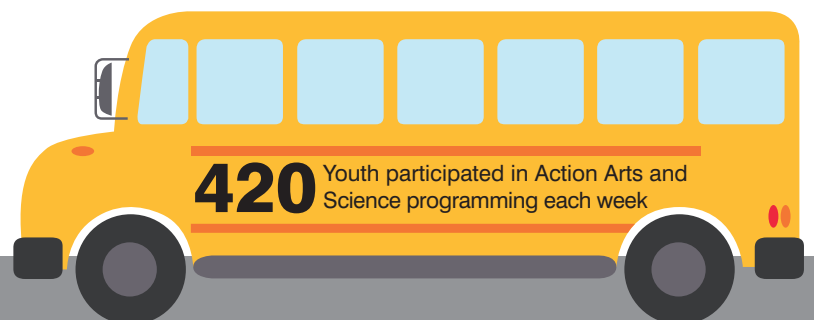
- 787 audience members attended Performance Insights pre-performance discussions in 2017.
- 511 area preschoolers learned about fire safety and burn prevention at the Burn Awareness puppet show at the Washington Pavilion.
- 64 fifth grade students from Lowell Elementary participated in etiquette lessons and a performance of the Dallas Children's Theatre's production of Mufaro's Beautiful Daughters followed by a formal lunch at the Washington Pavilion.

Action Arts and Science Program

The Action Arts and Science Program provides weekly hands-on art and science classes for at-risk youth in the region at no cost. The Action Arts and Science Program brought Washington Pavilion instructors and resources to kids throughout the community with STEAM (Science, Technology, Engineering, Art and Math) programming for youth. The Action Arts and Science Program provided weekly outreach opportunities to students at the Multicultural Center, Youth Enrichment Services (two locations), the Boys and Girls Club, Kidz Count, the Juvenile Detention Center, Bowden Youth Center, the YMCA After School Program at three middle schools, ten Kids Inc. sites at local elementary schools, Kids Stop and the Volunteers of America Youth Chemical Dependency Unit. Other outreach efforts included offering hands-on arts and science activities for families at community events. Over 420 youth participated in Action Arts and Science programming each week throughout the school year at over 20 partner after-school sites.

Visual Arts and Science Outreach and Education

- 159 students (pre-K-8th grade) participated in the 2017 Design Challenge, an engineering-focused event where creativity and the scientific process allowed participants to design and build marble roller coasters.
- 446 students from Lowell Elementary participated in specially-designed interactive labs through a partnership that brings them to the Washington Pavilion for a science curriculum-tied experience each year.
- Ag Friday, an annual event celebrated as part of National Agriculture Week, was attended by 403 third graders at the Washington Pavilion, who learned about South Dakota farming and agricultural science.
- 50 area students presented projects at the Annual Science Fair Showcase.
- 1,300 students of all ages took part in Discovery Labs or Art Smart Studio workshops with their school or community groups.
- The artwork of 300 students was displayed in *Off the Fridge* art exhibitions in the Washington Pavilion's 2nd floor lobby.
- Adults from Lifescape regularly created and learned about art during visual arts classes in the Washington Pavilion's Carver Classroom.
- 249 patrons participated in the Pavilion's weekly Open Clay studio program.
- The Washington Pavilion brought hands-on family activities to several community festivals, including JazzFest, Juneteenth, Sioux Falls Pride, Sanford Discovery Days, Women in Science, the Water Festival, Hot Harley Nights and the United Way Reading Festival.





Kirby Science Discovery Center

The Kirby Science Discovery Center (KSDC) is fully accredited by the American Alliance of Museums. The museum is the region's foremost hands-on science experience, featuring over 110 interactive permanent exhibits, nearly 20,000 square feet of exhibition space and the 160-seat Wells Fargo CineDome. In 2017, 87,000 patrons experienced the Kirby Science Discovery Center and Wells Fargo CineDome.

Thousands of additional students and families were exposed to science programming through the Washington Pavilion's participation in offsite festivals, workshops and demonstrations including Women in Science, the Sioux Empire Water Festival, JazzFest and the annual It's All About Science Festival.

Math Moves

From May through September of 2017, the Washington Pavilion welcomed *Math Moves*, a temporary exhibition through The Science Museum of Minnesota. This exhibit invited visitors of all ages to build their math muscle and challenged them to work together in a playful, full-body exploration of ratios, proportions and other fundamental math concepts. *Math Moves* used a variety of hands-on activities to make experimenting with concepts at the heart of math memorable and fun. It encouraged patrons to use their minds, bodies and imaginations to investigate basic math ideas and find their meaning and relevance.

PROGRAMMING AND SPECIAL EVENTS

Stage Science & Mobile Cart Demonstrations

Approximately 16,600 patrons attended scheduled 20-minute demonstrations at Avera Stage Science, sponsored by Avera and located on the 3rd floor of the KSDC. Demonstrations and Science on Wheels demo cart activities were led by trained science center staff and volunteers throughout the year and

allowed patrons to explore a variety of rotating science topics.

Spooky Science

On October 14, over 1,100 patrons attended the annual Halloween event. The theme of Spooky Science 2017 was "Explore Your Senses" and featured sensational and spooky activities for all ages at the Kirby Science Discovery Center and the Visual Arts Center. New Halloween-themed activities included scavenger hunts, flashlight tours and two drawing classes, including "How to Draw a Monster" and "Ballerina Figure Drawing," featuring ballerina Maria Skoruk from the Moscow Ballet.

WELLS FARGO CINEDOME EDUCATIONAL FILMS

26,000 patrons enjoyed mission films in the Wells Fargo CineDome in 2017. Films regularly presented in the CineDome included:

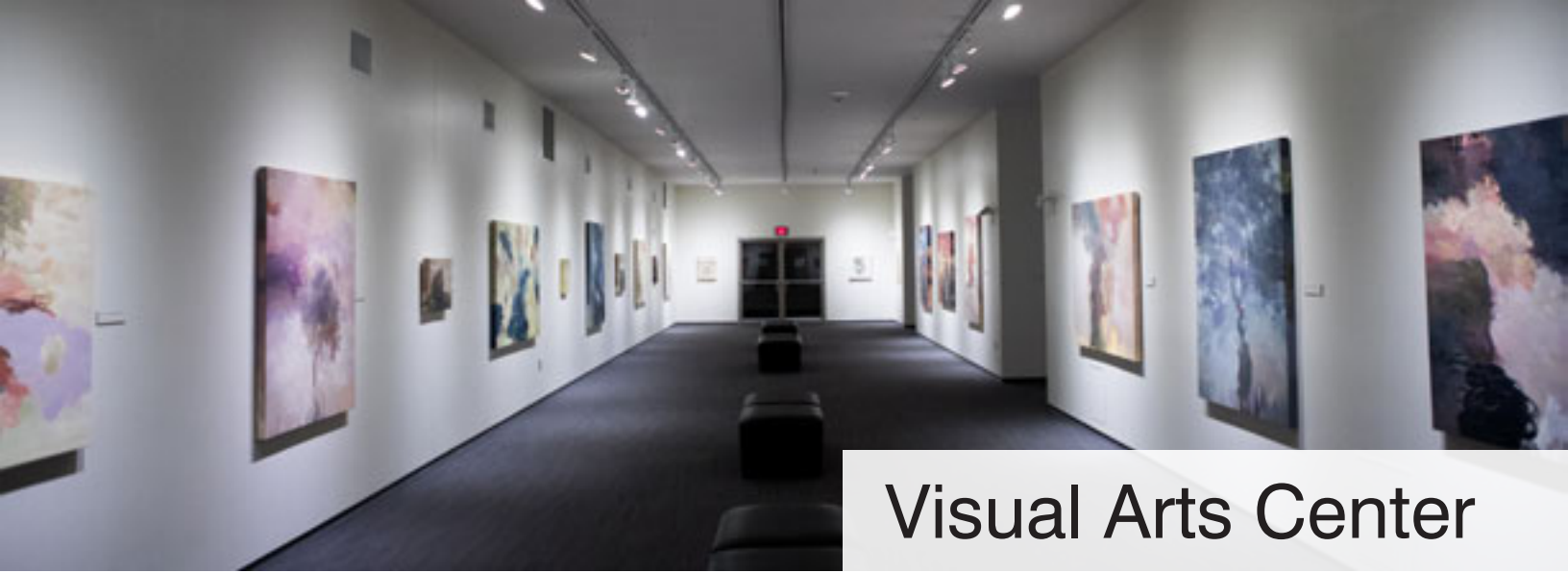
- "Extreme Weather"
- "Amazon Adventure"
- "Dream Big"
- "Wild Africa"
- "The Light Before Christmas"
- "Journey to Space"
- "National Parks Adventure"
- "Incredible Predators"

Hollywood film titles were scheduled daily at 1:45 p.m.

89,000

patrons experienced the Kirby Science Discovery Center and Wells Fargo CineDome.

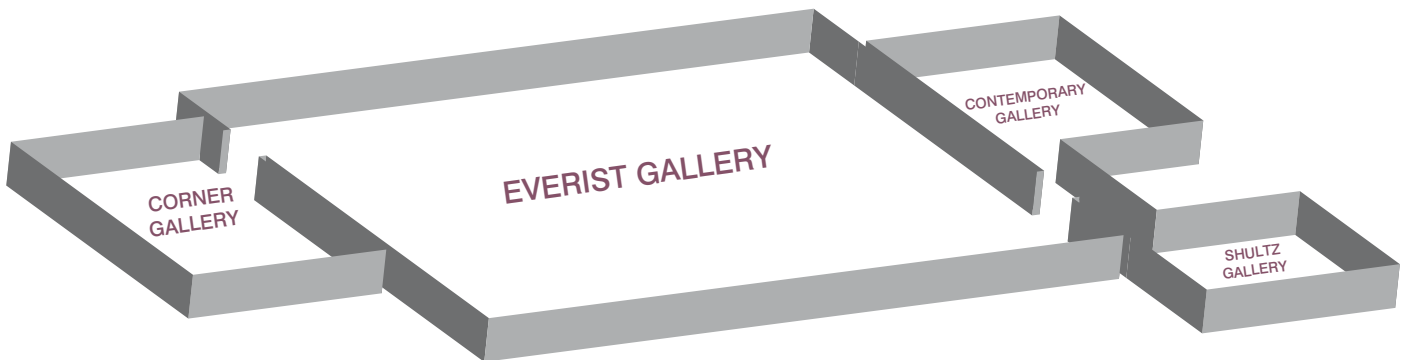




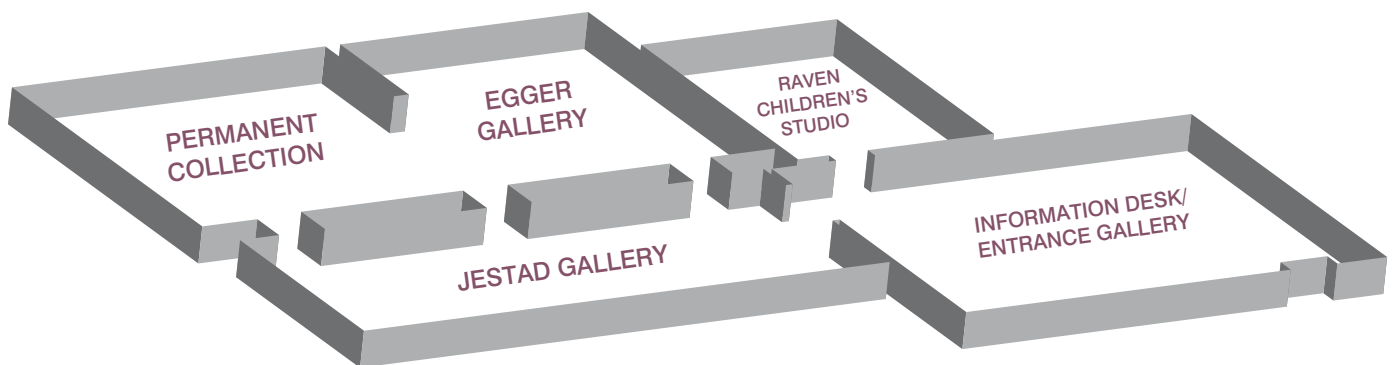
Visual Arts Center

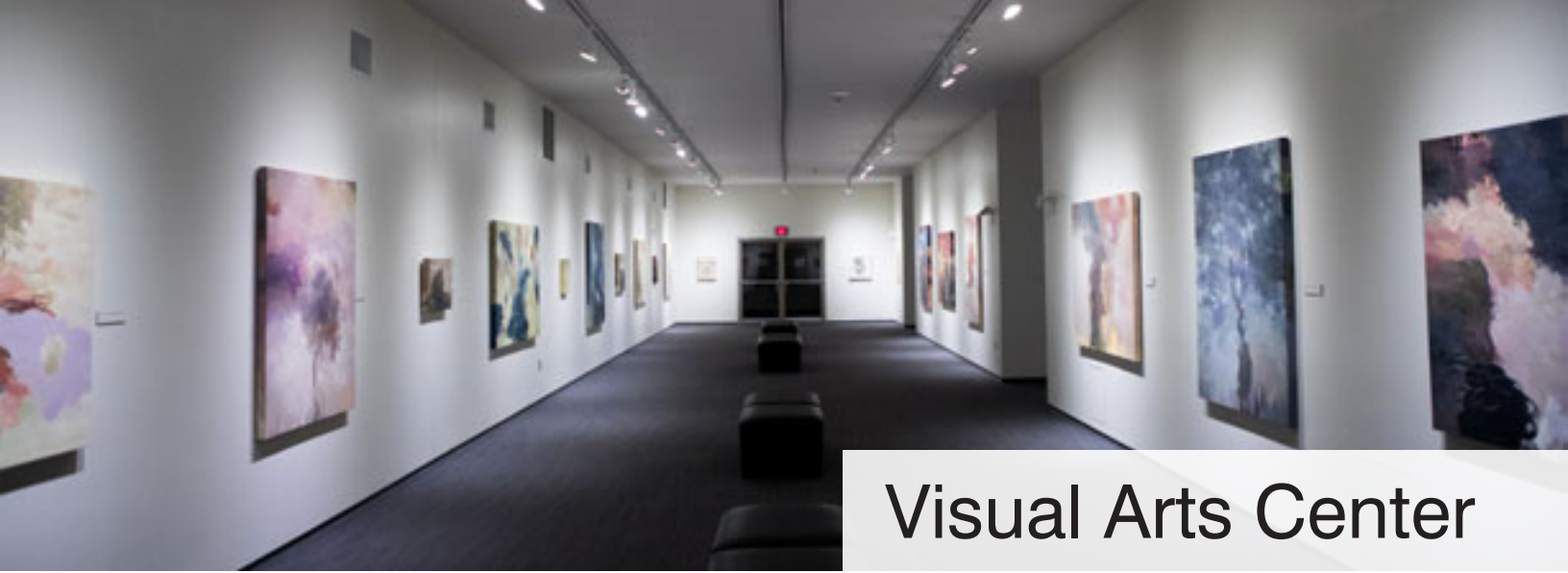
The Visual Arts Center (VAC) is fully accredited by the American Alliance of Museums. In 2017 the VAC continued its tradition of bringing exciting and relevant art to the region through exhibitions and related programming, collections (Permanent and Education Collections), and special area events. The VAC features eight galleries and more than 10,000 square feet of creative exhibition space in addition to 5,000 square feet of lower level workspace and art storage. The Raven Children's Studio is a popular destination for being both creative and imaginative through interactive art and play. The VAC welcomed 22,000 visitors in 2017.

Upper Level Galleries



Main Level Galleries (Entrance on 2nd floor)





Visual Arts Center

HIGHLIGHTS

Arts Night

2017 Arts Night was a community highlight once again as the event celebrated its 56th year. The VAC was able to honor Rob Oliver as the 2017 Emeritus Award winner, which recognizes outstanding and ongoing support and commitment to the Visual Arts Center as an advocate for the visual arts and artists. The Auction and Gala, which was held on April 29, 2017, showcased more than 40 artists and raised \$47,000 from auction and ticket sales. The generous support of the Arts Night Sustainers Group resulted in securing additional funds of \$37,000 for the event.

Sidewalk Arts Festival

The Washington Pavilion welcomed 239 artists, crafters and food vendors to its 54th Annual Sidewalk Arts Festival on September 9, 2017. Shoppers filled the streets around the Washington Pavilion, enjoying handmade creations, delicious food and live entertainment. The Sidewalk Arts Festival is a lively celebration of the arts and gathers people from around the region to support the Washington Pavilion's Visual Arts Center. The event raised \$116,000 through booth space rental, sponsorship and pop booth sales. A short rain shower didn't deter the festivities in any way in 2017! In fact, the rain actually cooled things off and gave hundreds of people the opportunity to visit the Visual Arts Center's galleries.

Paladino Hohm Sculpture Garden

The Paladino Hohm Sculpture Garden, which houses VAC Permanent Collection pieces like *Friendship Knot #2* by Yupin Pramotepipop, *Charging Buffalo* by Richard Hunt, *Tallgrass* by Dale Lamphere, and the *Garden Gate* by Bob Natz, continued to be a favorite location for many in the downtown community and overall region. The garden is accessible with a large, well-lit fountain, seating for lunch, and three rotating sculptures made possible by the Sioux Falls SculptureWalk and the City of Sioux Falls. The garden will continue to host sculptural exploration, events, outdoor lunch access, music and much more. General maintenance and upkeep was made possible by endowment support from Jack Paladino.

Exhibit and Programming Highlights

The VAC always looks to do more than simply host an exhibition. The educational opportunities associated with the exhibition become almost as important as the artwork itself for many in the facility. Exhibition and programming highlights in 2017 included:

- Artists Reina Okawa and Teresa Dunn, who conducted art workshops with local students through the Washington Pavilion's Action Arts and Science Program.
- Gallery talks for exhibitions throughout the year.
- VAC visitors and community members contributed to an origami mural of Sioux Falls in Reina Okawa's *Homegrown Origami* through folding parties at schools, community venues (including Queen City Bakery) and in the Visual Arts Center's Everist Gallery.

Welcomed a New Director

In August of 2017, the Visual Arts Center welcomed Jason Folkerts as its new director. By late December of 2017, in tandem with the Washington Pavilion's new programming model for 2018, Jason made the positive and exciting transition to serve as the Director of Exhibits and Collections.

In his new role, Jason oversees both the Visual Arts Center and the Kirby Science and Discovery Center's exhibit and collection work. The merging of these areas will provide even greater growth, partnership opportunities and attendance in the coming years.





Exhibitions

VISUAL ARTS CENTER 2017 EXHIBITIONS:

Steve Bormes <i>Deep Sea Imaginarium</i> , Everist Gallery.....	Sept. 10, 2016-Jan. 29, 2017
T.L. Solien <i>Gone West</i> , Jerstad Gallery.....	Oct. 22, 2016-Feb. 19, 2017
<i>Awake, Aware</i> , Permanent Collection Gallery.....	July 16, 2016-Jan. 8, 2017
Walter Portz <i>Shearing the Shepherd</i> , Corner Gallery.....	Sept. 24, 2016-Jan. 22, 2017
Ceca Cooper <i>Elsewhere and Here</i> , Contemporary Gallery.....	Dec. 10, 2016-Apr. 9, 2017
<i>The Local Artist: Fall 2016 Issue Reveal</i> , Shultz Gallery.....	Dec. 17, 2016-April 16, 2017
<i>New Voices in Contemporary Northern Plains Tribal Art</i> , Egger Gallery.....	Dec. 31, 2016-July 9, 2017
<i>The Original Hipster</i> , Permanent Collection Gallery.....	Jan. 14-July 2, 2017
RePRESENT: Arts Night 2017, Everist Gallery-East.....	Feb. 4-April 23, 2017
Marie Bannerot McInerney <i>Cubiculum Nocturnum: blue shift</i> , Corner Gallery.....	Feb. 4-July 23, 2017
Carl Grupp: <i>Artist & Collector</i> , Everist Gallery-West.....	Feb. 11-June 11, 2017
Brian Frink <i>Wide Open Space</i> , Jerstad Gallery.....	Feb. 25-June 25, 2017
Teresa Dunn <i>M o t h e r l o a d</i> , Contemporary Gallery.....	April 15-Aug. 6, 2017
J. Charles Cox <i>Amass/Sort/Adhere/Sever</i> , Shultz Gallery.....	Apr. 22-July 30, 2017
Reina Okawa <i>Homegrown Origami: An Interactive Community Installation</i> , Everist Gallery East.....	May 5-June 11, 2017
<i>Above the Fold: New Expressions in Origami</i> , Everist Gallery.....	June 24-Sept. 17, 2017
Paul Peterson <i>Advocate Valence / A Limit Case Scenario</i> , Jerstad Gallery.....	July 1-Oct. 15, 2017
<i>Provenance: Art Stories</i> , Permanent Collection Gallery.....	July 8, 2017-Jan. 14, 2018
<i>Perspective: Engaging Through Art</i> , Egger Gallery.....	July 15, 2017-Feb. 11, 2018
<i>On Monotony: Meditations in Video Art</i> , Corner Gallery.....	July 29, 2017-Jan. 7, 2018
Anna Youngers <i>In Search of Beauty: Meditations on Classical Themes</i> , Shultz Gallery.....	Aug. 5-Nov. 26, 2017
Emily Stokes <i>Cracked Open</i> , Contemporary Gallery.....	Aug. 12-Dec. 3, 2017
<i>South Dakota Governor's 7th Biennial Art Exhibition</i> , Everist Gallery.....	Sept. 30, 2017-Jan. 14, 2018
Heidi Draley McFall <i>Drawn to the Darkroom</i> , Jerstad Gallery.....	Oct. 21, 2017-Jan. 28, 2018
Connie Herring <i>The Tiramisu Diaries</i> , Shultz Gallery.....	Dec. 2, 2017-March 18, 2018
Donald Montileaux <i>Transitions of Lifestyles: Drawings from Hides to Ledger Paper</i> , Contemporary Gallery.....	Dec. 9, 2017 – Apr. 1, 2018



Acquisitions

The Visual Arts Center (VAC) Collections continued to grow with the acquisition of the following artworks in 2016:

NEW ACQUISITIONS

Permanent Collection

- Diana Behl, *resulting clamor*. Donated by Betty L. Beer Franklin.
- Diana Behl, *Strips*. VAC Purchase.
- Tracy Otten, *Mistaken Identities*. Gift of the artist.
- Alice Neel, *Mother and Child*. Donated by Betty L. Beer Franklin.
- Emil Her Many Horses, *Otter Bag*. VAC Purchase.
- Tim Peterson, *Study for Self-Portrait (Jacket)*. VAC Purchase.
- Carl Grupp, *Diogenes' Dream*. VAC Purchase.



Fundraising and Volunteers

“You get the best out of others when you give the best of yourself”

-Harvey Firestone

Corporate sponsors, individual donors, granting organizations and volunteers collectively added tremendous value to the Washington Pavilion and made the growth and development of its offerings possible. To all of those who gave their time, talents and resources to make 2017 a successful year - we thank you!

VOLUNTEERS

- Number of active volunteers: 283 (active volunteers serve at least once per calendar year).
- Number of hours of recorded volunteer service: Approximately 17,000 hours.
- Number of new active volunteers in 2017: 58.

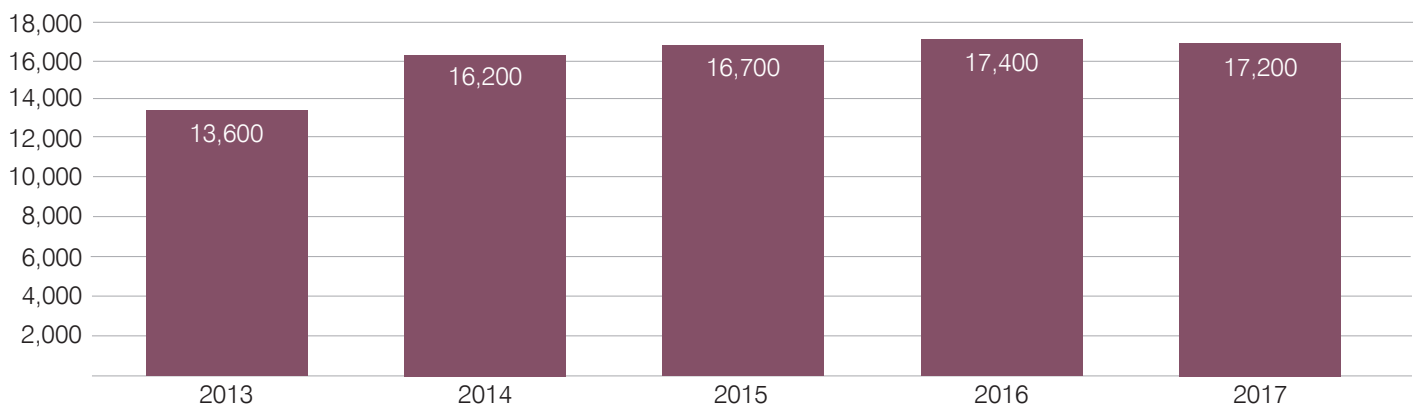
NEW VOLUNTEER POSITIONS/INITIATIVES INCLUDE

- Phone-a-Thon volunteers who assisted with donation efforts through the Washington Pavilion’s Development department.
- Visual Arts Center exhibition volunteers who assisted with installation and de-installation duties in a variety of galleries.
- STEAM (Science, Technology, Engineering, Art and Math) Maker Lab volunteers that assisted patrons with the creative activities and challenges available to them in this unique space.
- Group Services Concierges that assisted school and community groups on field trip visits to the Washington Pavilion.

MEMBERSHIP DATA

- 2017: 3,181 memberships

Number of Hours of Recorded Volunteer Service





Fundraising and Volunteers

GRANT REPORT

The Washington Pavilion receives grant funding annually to support our staff and programming. The Washington Pavilion is grateful for the generosity of a variety of granting organizations and foundations that allowed the organization to grow and develop its offerings in 2017. In particular, the Washington Pavilion would like to highlight the following gifts:

Generous grants from the South Dakota Department of Education, the David B. Jones Foundation and the South Dakota Arts Council were pivotal in the continuation and development of the Action Arts and Science Program, building-wide paleontology education and organizational support for the performing arts and visual arts at the Washington Pavilion, respectively.

Contributions from the Sheldon Reese Foundation, Mary Chilton DAR Foundation, The Boston Foundation, Sam's Club, The Women's Alliance through the Sioux Falls Area Community Foundation and Shopko increased accessibility by providing scholarships for area youth to participate in a variety of CLC programming, including camps, classes, preschool and the Dakota Academy of Performing Arts (DAPA) music and theatre offerings. Additional Community Learning Center outreach programs and collaborative partnerships with area schools were made possible thanks to the generous support of the Institute of Museum and Library Services, the Hull Family through the Sioux Falls Area Community Foundation and HR Green.

Support from Xcel Energy Foundation, the Sioux Falls Area Community Foundation, the National Endowment for the Arts, Midco and the South Dakota Governor's Biennial Exhibition enriched the programming of the Visual Arts Center, particularly with origami events that took place in 2017.

The Sercl Family through the Sioux Falls Area Community Foundation, the Adams-Mastrovich Foundation, the Sioux Falls Morning Optimists, Sioux Valley Energy and the Graco Foundation provided generous funding for DAPA theatre and music programs.

Grant awards from Monsanto, RBC Wealth Management and the Delbridge Family Endowment through the Sioux Falls Area Community Foundation made it possible for the Kirby Science Discovery Center to launch a Spanish Immersion initiative in tandem with *Space: An Out-Of-This-World Experience* exhibition on the 2nd floor of the Kirby Science Discovery Center.

Additional support from Wells Fargo and Verizon allowed for continued and improved programming in the Wells Fargo CineDome and with the Washington Pavilion's monthly Super 2nd Saturday events.

DONATIONS TO OTHER ORGANIZATIONS

- In-Kind: \$26,000
- Kirby Science Discovery Center and Visual Arts Center Vouchers: 832 passes, valued at \$13,000
- 2017: 145 Performance tickets and eight dinners valued at approximately \$8,000
- Knudson Open Door Fund: \$2,800





Thank You!

Corporate/Foundation Donors

The Washington Pavilion is profoundly grateful for the generosity of donors who make it possible to inspire young and old with outstanding arts and science programming. With sincere gratitude we acknowledge the individual, family, corporate and foundation donors who have made contributions for all purposes during 2017.

President's Circle - \$25,000+



Thank You!

Corporate/Foundation Donors

Platinum - \$10,000-\$24,999

Architecture Incorporated
Bank Midwest
Billion Toyota Scion
CitiBank
Great Western Bank
Institute of Museum and Library Services
JDS Industries
L.G. Everist, Inc.
Midco
Monsanto Fund
Vance Thompson Vision
Wellmark Blue Cross Blue Shield
Wells Fargo Bank

Gold - \$5,000-\$9,999

Adams-Mastrovich Family Foundation
Boyce Law Firm, L.L.P.
CorTrust Bank
First Bank & Trust
The Journey Group
Mathnasium
MetaBank
NorthWestern Energy Corporation
Pepsi-Cola Bottling Co
POET, LLC
Raven Industries Inc.
Scheels
SDN Communications
Sercl Family Fund*
Sheldon F. Reese Foundation
Showplace Wood Products, Inc

US Bank
Verizon Foundation
Waterbury Heating & Cooling Inc
Woods, Fuller, Shultz & Smith P.C.
Xcel Energy Foundation

Silver - \$2,500-\$4,999

Boston Foundation
CenturyLink, Inc.
CNA Surety
Egger Steel Company
Eide Bailly LLP
Henry Carlson Company
Howes Oil Co.
McKinney Olson Insurance
Modern Woodmen of America
Paulsen Marketing
Reliabank
Sioux Falls Area Community Foundation
South Dakota Section, American Society of Civil Engineers
South Dakota Soybean Research & Promotion Council

Bronze - \$1,000-\$2,499

AARP South Dakota
ADwerks
Blend Interactive
Click Rain, Inc.
Davenport, Evans, Hurwitz & Smith, LLP
The Delbridge Family Endowment

Denny Sanford Premier Center
Graco Foundation
Gunderson's Jewelers
HDR Engineering, Inc.
J.H. & Sons Clothier
KSFY
McDonalds
Midco Foundation
National Endowment for the Arts
New York Life Foundation
Pipestone System
The Prairie Golf Club
RBC Foundation - USA
SD Beef Industry Council
SDSU College of Agriculture and Biological Sciences
Sioux Falls Morning Optimists
Sioux Falls Storm
Sioux Valley Energy Customer Trust
South Dakota Biotech Association
South Dakota Farm Bureau
South Dakota Trust Company LLC
Tri-State Neighbor
Walmart
Washington Square Partners LLC

Partner - \$500-\$999

Argus Leader Media
Augustana University
Bath Fitter

Culver's
Dean Foods/Land O' Lakes
Dynamic Spine
Chiropractic Health Center
Gardner's Wisconsin Cheese
Hefty Seed Company
Hy-Vee
The Insurance Connection: Oscar and Lori DeVries
Johnson & Christensen Law Office, PC
Koch Hazard Architects
Mahlander's
Midland National Life Insurance
Midwest Communications
Muth Electric Inc
Pepsi
Sam's Club Foundation
SD Beekeepers Association
Sioux Basin Cattlemen - South Dakota Cattlemen's Association
Sioux Falls Woman's Alliance
South Dakota Pork Producers Council
South Dakota Wheat Commission
TSP
Virginia Dettman Charitable Fund*
Waste Management of Sioux Falls
Xcel Energy

Thank You!

Corporate/Foundation Donors

Contributor - \$250-\$499

Ag United for South Dakota
 Agropur Inc.
 American Coalition for Ethanol
 Architectural Roofing and Sheetmetal Inc.
 Balleraena Dance Studio
 Bel Brands USA
 C&R Supply Inc
 CHS Eastern Farmers
 CHS Inc.
 Crist Orthodontics PC
 D & W Industries
 Dairy Queen
 Dakota Layers
 Delta Dental
 Flooring Unlimited
 Good Night Theatre Collective

Highest Health Chiropractic
 Julie Grossman Interior Design, LLC
 MD Engraving
 Midwest Dairy Association
 Mrs. Murphy's Irish Gifts
 Pheasants Forever
 Piper Jaffray
 Remedy Brewing Company
 SD No Till Association
 Shalista Photography
 The Shopko Foundation
 Sioux Falls Polo Club
 South Dakota Agri-Business Association
 South Dakota Grasslands Coalition

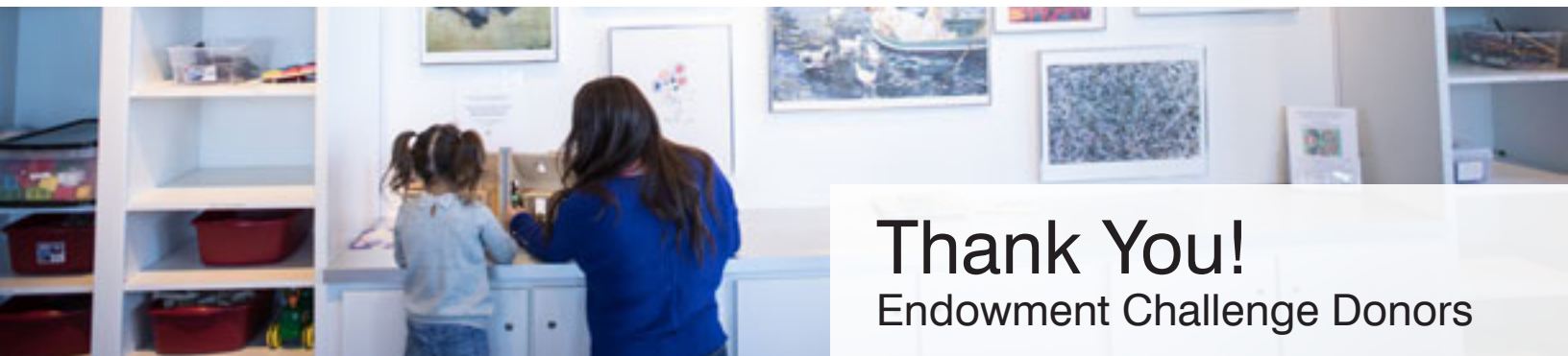
Supporter - \$100-\$249

Cadwell Sanford Deibert & Garry
 Child's Play Toys
 First Financial Service Center
 Hexad Farms
 Josephine's Floral
 Miss Jaspers' House
 Pepper Entertainment
 Quail Honey
 Queen City Balloons
 Smithfield Foods
 Wing Stop
 Zoup!

Dakota Musicians Collective
 Eddy Joy Baby Boutique
 Ferson Brewing Company
 Kidtopia
 Queen City Bakery
 Queen City Concierge
 Shopdog Boutique
 Thunder Road
 Wild Water West

Friend - \$1-\$99

AmazonSmile Foundation
 B & G Milkyway
 Breadsmith
 Coldstone Creamery



Thank You!

Endowment Challenge Donors

Jack Paladino
 Bell Incorporated
 Bellmark Properties Inc.
 Mark and Pat Graham
 Miles and Lisa Beacom
 Dan and Arlene Kirby

Joe and Jennifer Kirby
 Al Schoeneman
 The Jerstad Family Foundation
 Richard and Michelle Van Demark

Daniel and Sara Crosby
 Steve and Betty Crim
 Tom and Mary Simmons
 Peg and Bill Baker
 Scott and Julie Ward
 Midco Foundation

Charles and Liz Gullickson
 Pam and Tim Homan
 Brad and Melinda Heegel
 Brian and Stacey Jans



Thank You!

Individual Donors

Platinum Partners - \$10,000+

Dan and Arlene Kirby*
 Ronald and Joanne Moquist

Gold Partners - \$5,000-\$9,999

Rhonda and Richard Baker
 Daniel and Sara Crosby*
 Mark and Pat Graham
 Dody and Boyd Hopkins*
 Joe and Jennifer Kirby*
 Kevin and Peggy Kirby*
 Dave and De Knudson
 Craig and Patricia Lloyd
 James and Kara Mathis
 Mrs. Sandra and Dr. Douglas Pay
 Jeff and Katie Scherschligt
 Paul and Koni Schiller
 Al Schoeneman
 Mary Pat and Gerald Sweetman*

Silver Partners - \$2,500-\$4,999

Brett Baloun and Jennifer White

Lisa and Miles Beacom*
 Bill and Lynne Byrne
 Steve and Kris Egger*
 Jerome and Mary Freeman

Larry and Suzanne Fuller
 Rich and Mary Garry*
 Lizbeth and Charles Gullickson

Benson and Jennifer Hsu
 Rick and Glenys Hull*
 Steve and Becky Johnson*

Robert and Kathryn Leech
 Fred and Sharon Lovrien*
 TJ and Gayle Reardon*
 Mark and Peggy Shlanta
 Dr. Loren and Mrs. Jean Tschetter

Richard and Michelle Van Demark*

Marilyn and Robert VanDemark*

Cheryl and Kenneth Walter*

Eric and Emily Weisser

Grand Partners - \$1,000-\$2,499

Brian and Denise Aamlid

Dr. Richard and Mrs. Tammra Allen

John and Sherry Archer
 Linda Baker

Craig and Teresa Carlson
 Melanie Carpenter and Robert Breit

Scott and Carolyn Christensen*

Julie and Paul Darrington
 Donald and Josephine Dougherty

Tim Dougherty and Karen Schreier

LaDawn and Dana Dykhouse

Joe and Debra Erickson
 David and Julie Ermer
 Michelle and Tyler Haahr

Ms. Angela and Dr. Geoffrey Haft

Curtis and Glenda Hage
 Lisa and Rizan Hajal

Bob and Kim Hayes

Phil and Martha Helland
 Michael and Cindy Huether

Mr. Michael and Dr. Kelly Jerstad

Terry and Diane Johnson

Susan and Richard Johnson

Orvar Jonsson and Anna Svavarsdottir

Amy and Kristofer Kimber
 Chase and Rachael Kramer

Peg and Steve Lange
 Linda and David Marquardt

Dr. Milt Mutch

Gary and Joan Olson*
 Mrs. Matilda and Dr. Mark Oppenheimer

Kim and Susan Patrick*
 Scott and Maryanne Petersen

Dr. Judith and Mr. Michael E. Peterson

Don and Ann Platt
 Ann and Brad Randall
 Kristin and Thomas Reaves

Lori and Jim Redlinger

Tracie and Steve Rohlf

Steve and Kathy Sanford

Tom and Kathrine Schnabel

Tom and Mary Simmons

Linda Smith

Thank You!

Individual Donors

Darrin and Nikki Smith
Jeannette Stowsand
Mary Lou Theodosen
Larry and Suzanne Toll
Lindsay Twa and Mark Larson
Julie and Scott Ward
Michele and Roger Weber
Tom and Terry Welk
Tom and Lynne Zimmer

Pavilion Partners - \$500-\$999

Sheila Agee and LuAnn Eidsness
Jeffrey Albrecht
Sara and Ben Arndt
Bill and Peg Baker
Brian Chabot
Dr. Richard and Allison Crawford
Jarrod and Amber Edelen
Jolene and Dennis Erickson
Mike Fee
Diane and Charles Flohr
Cheryl and Tom Gaeckle
Arnold and Lynne Garson
Jeff and Julie Gednalske
Jane and Gerry Giddings
Stephanie and George Gongopoulos
Jack and Judy Hamilton
Dale and Linda Hart
Wendy and Bruce Hasche
Jane and Joel Hathaway

Brad and Melinda Heegel
Robert and Betty Hoffman
Kristi and Kevin Holm
Terry Hopkins
Jeff and Renee Hurley
Sara Keane-Baumgarten and Keith Baumgarten

Deborah Klein
Yannick Laroche and Shane Wuebben
Amy and Jon Lauck
Patrick and Kaye Lawler
Alfred and Donna Lupien
Michael and Beth MacDonald
Jon and Patsy Madland
Steve and Judy Mahlstedt
Eugene and Susan McGowan
Kathy and Jim McMahan
Mary McQuillen
Randy Nelson
Jan Nicolay
Robert and Kristine O'Connell
Tim and Tiffany Olson
James and Bergen Peterson
Jeffrey and Glenda Pray
Chris Rich
Anna and Arvin Santos
Dr. Jeff and Mrs. Vickey Saylor
John and Kelly Seitz
James and Diane Sturdevant

Camela and Tyson Theeler
David and Mary Tidwell*
Chad and Autumn Van Buskirk
Feeble Moose
Daryl and Mary Wierda*

Contributors - \$250-\$499

Greg and Allison Alvine
Julie and Tom Ashworth
Jeff Ball and Michele Brochu
June and David Bean
David Bergin and Liz Spivey
Jeannie and Burke Blackman
Braden Bradfield
V R and Mary Brandenburg
Linda Broecher-Pfeifer
Mark and Jean Bubak
Joan Clark
Jennifer and Steve Condron
Roger Cunningham
Mary DeJong and Tate Profflet
Pat and Paulette Doyle
William and Rosemary Draeger
Robert and Rita Elmen
Joel and Alicia Farmer
Barb and Gary Fish
Pam and Skipper Fritz
Tom and Ann Garry

Nick and Sheila Gladue
Merlin and Sherri Goebel
Mike and Lori Hahn
Douglas and Anne Hajek
Molly and Robb Hillman
Brenda and Alan Hodgson
Rose Ann and Josh Hofland
John and Anne Hughes
E Milt and Mary Husby
Todd and Barbara Jacobson
Mark Johnson
Mr. Trent Johnson and Dr. Jeanne Hassebroek-Johnson
Ed and Karen Johnson
Patty and Kevin Kase
Jason and Tiffany Knudtson
Helen Koliner
Ryan and Sarah Kroetch
David Larsen and Karen Heiling
Lance and Mary Larson
Jason and Tabatha Lemke
Carol and John McGrath
John McIntyre
Laurita and Scott McKercher
Liz and Ryan McMillan
Bill and Jane Miller
Jack and Lona Miller
Curtis and Kimberley Mortenson
David and Suzie Munce

Thank You!

Individual Donors

Tom and Jean Nicholson
Ivy Oland Dandar and
Dave Dandar
Mary and Eric Olson
Matthew and Keri Orstad
Ann Parker Weckwerth
and Gary Weckwerth
Dr. Rodney and Mrs. Ruth
Parry
Carolyn Paulson
Edward and Charlotte
Peters
Truman and Nancy Phelan
Robert and Sara Post
Chloe and Ryan Powell
Maureen and James Robl
Shannon and Jodi Schultz
Zeb Sheppard
Kenneth and Vickie Smith
Tom and Margie
Smotherman
Dana and Chad Spanos
Betty Strom
Nick Suridis
Thomas and Tricia
Syverson
Leigh and Melinda Talley
Blair and Linda Tremere
Graham and Courtney
Van Horn
John and Ramona Wade
Seth and Mara Walter
Roger White
James and Karri
Wiederrich
Chuck and Norma Wise

Supporters - \$100-\$249

Susan and Fred Aderhold
Sue and Rich Aguilar
Dr. Loren and Mrs. Mavis
Amundson
Catharine Anderson
Warren and Sarah
Anschutz
David and Marilyn
Aronson
Dr. Paul and Mrs.
Margaret Aspaas
Martha Baker
Rebecca and Matthew
Barker
Ruth Barlow
Thomas and Becky
Batcheller
Nancy and Dennis Beck
Kim and Janine Beck
Jim and Jean Beddow
Betty L. Beer Franklin and
Dr. Sherwood Franklin
Robert and Winnie
Behrend
Dr. Douglas and Mrs.
Gaye Bell
Charles and Judy Berdahl
Jennifer and Michael
Bergan
Christine and David Billion
Deb Birgen
Arnold Bjork
Robert and Clarice Black
David and Denise
Blackwelder
Dr. Jerry and Mrs. Susan
Blake

Curtis and Marilyn
Bloemendaal
Nancy Bloom
Scott and Raquel Blount
James Bockwoldt
Carrie Bornitz
GP and Milli Bowen
Tacey Braithwaite
Connie Brandenburger
Darrell and Ann Brink
Todd and Linda Broin
Martha Brost
Paul and Julie Bruflat
Denis and Diane
Bruggeman
Christine and Steve
Bruning
Andrew and Andrea
Burchett
Mary Burnette
Judy and Ron Buseman
Wendy Butler-Boyesen
and Martin Boyesen
Kathryn Cahoy
Bonnie Callies
Janice and John Camp
Julie and Chuck Caron
Charlotte Carver
Jeremy and Teresa
Cauwels
Carla Chiu
Thomas Chiu
Michael and Monique
Christensen
Linda Christensen
Harold and Nora
Christensen

Ronald and Kathleen
Christensen
Kathleen and Dennis
Christopherson
Phyllis and Jim Clark
Richard and Kari Clark
Justin and Beth Clarke
Lori Clausen
Joyce Clay
Shawn and Julie Cleary
Paul and Mary Ellen
Connelly*
Michael and Judith
Connor
Monica and Corey
Conover
Gary and Kathy Conradi
Brian and Carrie Corner
Steve and Jill Corum
Dan and Janet Costello
James and Marie Craig
Roland and Lynn
Crawford
Kenneth and Mary Ann
Cross
Marlene and Ronald
Daale
Judith and Phil Davis
Laura Davis-Keppen*
Dr. Richard and Julie Day
Keith and Jill Deibert
Caroline Deinema
Keith and Beth Demke
Diane and Dave Derry
Sandra and James DeSaix
Sue DeVos
Norm and Darla DeWit

Thank You!

Individual Donors

Ronald and Lexia DeWit
Terry and Karen Dickman
Sandi Doss
Karen and Kevin Doyle
John and Cheryl Dyvig
LeRoy Easterday
Jessie Easton
Philip Eckhoff and Renee Christensen
Ron and Aldena Ecklein
Anthony and Lisha Edelen
Mary Egglesfield
David Eidsness and Debra Duff
Orin and Linda Ellwein
David and Julie Elson
Marcia and Dennis Engel
Douglas and Shirley Erickson
Gary and Rosemary Evjen
Pat and Donn Fahrenedorf
Richard and Dee Farnham
Gary and Ruth Felderman
Lawrence and Gayle Fenton
David and Carol Fields
Randy and Joan Fink
Deb Fischer Clemens
Jason and Tracy Folkerts
Ann Forster
Lori Frankman
Jill and Mike Frederick
Diana and Mark Froning
William and Gail Fuller
Virgene and William Gast
Jami Gates
Mary Gederos
Doug and Evelyn Gibbons
Claire and Paul Gillaspey
Daren Gislason
Gwindy and Shannon Globke
Cassandra Goebel
Leslie Goodyear and Daniel Janis
Barbara Goudy
Richard and Sonja Gourley
Ron and Christy Green
Pam Greene
Bobette and Paul Greenfield
Elaine and Alan Groon
Beverly Gunderson
Andrea Gunner
Ken Haats
Tom and Donna Haber
Jessie and Marc Haffner
Suzanne Hagseth
Drs. Ruth and Stan Haidle
Eddie and Christine Hamilton
Dr. Milton and Mrs. Marjorie Hanson
Dan and Rita Harges
Carol and Robert Hardy
Mel Harrington
Juan Harrington and Anya Hartpence
Thadd and Linda Heberling
Kaia and Kurtis Hedrick
Paul and Ronette Hegg
Hans Heidemann
Kera and Jeff Heier
Tracey and Pat Heinemann
Theresa Henehan
Scott Henry and Terri Peterson-Henry
Jason and Angela Herrboldt
Marie Hess
Roger Hexem
Donna and Steven Hey
Tina and Robert Hillman
Heather and Steve Hitterdal
Chris Hoff and Laura Hofer
Amy and Joseph Hogue
Marlys and Paul Hohman
Karen Hohman
Jeffrey Holcomb and Robyn Starks Holcomb
Michael and Emily Homer
Dennis Hopfinger and Carolyn Clague-Hopfinger
Linda Hoppe
Gale Wiedow and Laura Horton
Barbara Horton
David Hosley
Michael Houk
Jenny and Grant Houwman
Warren and Denise Hovland
Mike and Bunny Howes
Randy Howey
Delwyn Hubers and Kevin Mickelsen
Steven and Tracy Huff
Dennis Hunter
Caitlin Hurley
Norma and Lowell Hyland
Jim and Sharon Irby
Ralph and Ginny Iverson
Rhoda and Ralph Janis
Brian and Stacey Jans
Dennis and Janelle Jarabek
Gary and Sharon Jarding
Sarah and Brian Jennings
Sandy Jerstad
Andree and David Johnson*
Thomas and Susan Johnson
Dr. Virginia and Mr. Jeffery Johnson
Mark and Karen Johnson
Chrissy Johnson
Rico Johnson
Julie Johnson
Ken Johnson
Lynne and Don Jones
John Jones
Glenn and Phyllis Jorgenson
Jane Justice
Michael and Gail Kabris
Arlene Kampshoff

Thank You!

Individual Donors

Dr. David and Ms. Mary Ann Kapaska	Cheryl Lehmann	Jack and Elnear Marshman	Dr. Jeffrey and Ms. Mary Jo Murray
Dr. Thomas and Mrs. Kay Kassube	Patricia and Ron Leiferman	Jon and Janet Martin	Charlene Nelson
Dick and Mary Kelly	Michael and Shirley Leimbach	Ronald Mattice	Larry and Diane Ness
Ann Kelly	Sheila Leinen	Lynette Matzen	Melissa Nicholson
Larry Kemerling	Tom and Dorothy Lemonds	Karen and Jerry May	David and Chris Nielsen
Dr. Earl and Mrs. Kathy Kemp	Carol Lerdal	James and Susan McAdaragh	John and Patty Nohr
Darla and Donald Kempf	Mary and Ben Lerssen	Mike and Jean McAlpine	Stephen Nord
Zachary and Denyelle Kenyon	Rev. Allen and Mrs. Brenda Lewis	Carol and Rod McGinnis	Kristina and Craig Nordby
Cody and Jennifer Kevan	Travis and Angela Liddell	Dr. Patrick and Mrs. Kathleen McGreevy	Judith and Daniel Norman
Richard and Gail Klein	Cam and Sharon Lind	Susan McIntosh	Kevin and Linda Nyberg
Chris and Tammy Klein	William and Lorrae Lindquist	Craig and Julie McKay	Donna Ohrt
Pam and James Klein	Editha Liu and Roberto Anel	Matthew and Bethany McKenzie	Mary Olinger
Geoff and Elise Knobloch	Janice and Larry Long	Jeff and LaVonne McKinney	Dr. Joe and Mrs. Nancy Olsen
Dr. Dick and Ms. Cindy Koch	Peter and Katherine Looby	Jane Meekins	Bert and Cindy Olson
Rhonda and Ken Koch	Mark and Kay Lounsbery	Mark and Judith Meierhenry	Phyllis and James Oplinger
Dorothy and Gilmore Koepsell	Mike Luken	Debbie and Dean Mertz	Jody and Cheryl Osmond
Linda and Dennis Kronaizl	Jorge Luna and Anelis Coscioni	Mickey Metcalf	Mrs Joy Outka
Pamela Kruger	George and Kay Lundberg*	Dianne Metli	Jack Paladino
Bill and Joyce Kubat	Lane and Lindsay Lundeby	Kristine Moberg and Mitch Jackson	Cindy and Jerry Palleschi
Randy and Beth Kuenzi	Sharon and Richard Lunder	Donna Moeller	Joan Pankonin
Chuck and Sandie Kuntze	Risty and Mike Maddox	Mary K Moen	Jeffrey and Carol Parker
Nancy and Rob Kunz	Bruce and Dianne Mair	John and Sue Mogen	Gary and Linda Pashby
Janis Landa	David and Patricia Malters	Mary Montoya and Leonard Johnson	Donald Paulson
Kerry Lange	Mary Ann and Eugene Marko	Douglas and Debra Morrison	Scott and Gayle Pearson
Nick Larsen	Christiane Maroun and Raed Sulaiman	Teddi and Jay Mueller	Andy and Tanja Pederson
LeRoy and Marlys Larson		Ardeen and Cindy Mulder	Michal and Dale Peltier
Melinda Larson		Laura and John Mullen	Paul and Patricia Penn
Duane Larson			Richard Perkins
Dale and Dee Larson			George Perry
Lisa and Charlie Larson			Howard and Sandra Peterson
			Andrea and Marian Petrasko

Thank You!

Individual Donors

Catherine and Lawrence Piersol
Charles and Jill Point
Duane and Debra Popham
Dave and Charis Poppens
Mary Ann Poppinga
John and Penny Porter
Stephanie Priesz and Tim Krenik
Kirby Proehl
Michael Prokop
Rev. Franklin and Mrs. Marit Pudas
Carol and Greg Puerkel
Wendy and Ryan Quam
Eileen Quanbeck
Eileen and John Quello
Tony and Mary Ratchford
Geraldine Ray
Joan Reddy and Gregory Boris
Marian Redlin-Reit and Royce Reit
Butch and LaDonna Reit
David Reznicek
Nikki and Mike Rhode
Kelly and Jeff Rhone
Edward and Rita Richter
Michelle and Daryl Rife
Al and Shannon Roettger
Margie and Rex Rolfig
Murray and Helen Rowe
Karen and Bryan Ruby
Helen Runge
Joel and Lois Running

Dan and Sharon Rykhus
Barbara Sampson
Dr. Paul and Mrs. Patricia Sampson
Kristina and Scott Schaefer
Ryan and Alison Schellpfeffer
Niki and Jim Schillerstrom
Ann and Chris Schiltz
Erica Schipper
Karen Schleusener
Pat and John Schlimgen
Anthony and Paula Schmidt
Ruth Schmidt
Sally and James Schnatterly
Terry and Robert Schnepf
Scott Schoenen and Paul Weiss
Greg and Karen Schultz
Trudee Schur
Joe and Tara Schwader
Steven and Lenae Schwartz
Susan Scott
Rebecca and Rod Sevening
Dale Severson
Warren Shoberg
Rob Shultz
RS Sivertson
Peter and Tami Skorczewski
Wes and Jo Skunberg

Raymond and Virginia Slechta
Scott and Ronna Sletten
Jane and Leon Smith
Laurie and Les Smith
Ann Smith
Carol and John Snobeck
Deb D Snyder
Deborah and Jerold Soholt
Arlo Sommervold
Marion Sorlien
Jim and Angie Soukup
Paul and Jilayne Sova
Sandra and Andrew Soye
Rose Spangler
Alan and Judy Spencer
Gary and Jean Staeffler
Rob and Nancy Stanek
Myrna and Gary Stanley
David and Katherine Starks
Julie and Mark Stordahl
Jeffrey and Reneece Strand
Brent and Shanda Stricherz
Lon and Mindi Stroschein
Kathleen Stuck
Tim and Nancee Sturdevant
Maureen and Bob Suga
Trish and Bob Swanhorst
Mark and Lisa Swenson
Joseph and Diane Sztapka

Daniel and Angie Taft
Kathy Taggart
Dr. Guy and Mrs. Carolyn Tam
Dr. Julius Theophilus and Vanria Wright
David and Nancy Thomas
Josh and Carry Thomas
Doug Thompson
Margaret Thornton
Eldon and Donna Thuron
Kerri and Jeremy Tietgen
Kristen and Russell Townsend
Stephanie and Charles Trautwein
Connie Tucker
Craig and Joyce Uthe
Brenda and Doug Van Zee
Jon and Suzanne Veenis
Adam Vogel
Nancy Vollan
Seth and Mara Walter
Harold Warner
Scott and Jennifer Weatherill
Beth and Vince Weber
Dustin and Tracy Weiss
Beverly and Ray Wellman
Bob Wendland and Luke Tatge
Colleen Werner
Liz and Ross Wheeler
Carey Wilkens
Elizabeth Willers
Judy and Dale Winter

Thank You!

Individual Donors

Andrew and Erin Wiswall
Cecelia Wittmayer
Ray and Liz Woodsend
Kim and Terry Wright
David Xenakis
Dr. David and Ms.
Candace Zeigler
Josh and Emily Zellmer
Mick and Cathy Zeman
Jayne and Michael
Zielenski
Rep. Larry and Judi
Zikmund
Joe and Kristen Zueger

Friends - \$1-99

Megan and Judd Albrecht
Ruth and Leroy Anderson
Caitlin and William
Anderson
Carol and Bob Simonson
Steve Ronken
Ruth Atkins
Philip Baker
Terry and Sheryl Baloun
Sheila Banyai
Jenni Bartmann
Christopher Bauer
Ethelle Bean
Abigail Beaumont
Gale Begeman
Lehn Benjamin
Jack and Deborah Billion
Roger and Dianne Bjork
Beth Bottolfson

Bonnie Brahms
Gail Brown
Nate Burdine and Jolene
Loetscher
Anne Burkard
Bonnie Bursing
Doug and Janine
Calsbeek
Kevin and Andrea Carlson
Jean and Dan Clarke
Vince Cook
Matt Cook
Brett and Laura Cooper
Bruce Cronin
Amanda Csobor
Claudia Dail
Meagan Dion
Margaret Donohue
Joan Doss
Carolyn and Ronald
Downs
Linda and David Drew
Jerrie and Richard Eicher
Kimberly Elliott
Gary Ensz
Angelina Fehcner
Carl and Amanda
Fellbaum
Ginger Fitzhugh
Amber and Dan Freese
Tye Gardner
Teri and David Geiver
Lisa Gerner
Bonnie Gilbertson
Jennifer and Kyle
Goldammer

Kristi and William Golden
Melissa Goodwin
James and Jill Groth
Cyndy Gylling
Gaylene Haber
Anton and Anne Haga
Mike and Lynne Hagen
Joel and Susan Hagen
Sally Hanson
Dave and Pat Hanten
Jen and Tim Hauer
Doris Haugen and James
Smorada
Devin Heesch
Jessica and Tim Heins
John and Amy Hinrichs
Ray and Pam Hofman
Mary Ann Hohman
Walter Hooker
Glenn and Susan Hooyer
Sophia and Andrew
Horski
Deborah Hovdenes
Kari and Chad Hultgren
Katharine and Nathan
Hults
Kenneth and Laurice
Iseminger
Barbara Iverson
Michael and Catherine
Jacobson
Beth and Greg Jamison
Erin and Mr. Richard
Johnson
Jackie and Adam Jones
Gene and Cynthia Jones

Brenda Jung
Carolyn Kading
Allyson Kasch
Janet and Wally Klawiter
Sara and Kevin Klawonn
Sandy Kouri
Elizabeth Kraft
Michael and Jackie
Kramer
Tracy and David Kroon
Estee Stene Krueger
Kami and Rich Kruthoff
Jill and Bill Kunstle
Erica and Levi Lacey
Terry and Sue Ann Lang
David and Amy Larson
Paula Lechner
Brandon Lee
Cynthia Lenz
Robert and Jane
Leonhardt
Carrie Liston
Sharon Loudenburg
Julie Lushbough
Cheryl and Mike Lynde
Melissa May
Herb and Vicky Mayhew
John and Gail McFarland
Stacey and Greg
McMahan
Carla McMurry-Kozak
David Measer
Krista Meyer
Sharon Michailidis

Thank You!

Individual Donors

Julie and David Mickelberg	Mark Phillippi	Mark Travnicek
Zack Millard	Lori Pokela	William and Marian Tucker
Gretchen and Justin Miller	Simon and Heather Reed	Linda and Wayne Van Berkum
Mary Milroy and Daniel Johnson	Marcella Remund	Shannon and Steve Van Buskirk
Tim and Julie Moen	Karen and Wayne Ruff	Summer and Griffin Vlietstra
Beverly Mork	Gary Ruhberg	Elizabeth Walberg
Betty Mortenson	Gwen Schaunaman	Debbie and Steven Wanderscheid
Karen Myers	Marlys Schmidt	Susan Weinkauf
Phyllis Myers	Jason and Linda Schulte	Judy Weisgram
Graham and Renee Myrick	Mike and Julie Schulte	JoAnn and Bruce Weller
Meaghan and Kyle Neuberger	Linda and Derald Shaw	Feeble Moose
Laurie and Thomas Norberg	Jessica Shaw	James and Marjell Wendland
Daniel Norgaard	Ian Shoemaker and Kate Skelly	Stacy Wengler
Margaret M. Novak	Ann Skoglund	Connie White
Sandra Odegaard	Clement Smith	Gavin and Katie Wigg
Maggie and Jeff Oliver	Kjerstin and Jamie Smith	Kent and Barb Wigg
Marlene Olson	Don and Dee Sorvaag	Jasmine Wodstrchill
Marlene Olson	Martell Spagnolo	Daniel and Deb Workman
Janet Olson-Finken	Sarah Speck	Thomas and Deloris Zender
Nicole Owens	Meghan Steinocker	
Kathryn and Matthew Parker	Fred and Shirley Stephens	
Ted Parsons	Elaine and Norman Stokes	
Arlene Pearsall	Beatrice Szekely	
Dale Pedretti	Jane Taylor	
Ramona and Rick Pesek	Douglas and Susan Tellinghuisen	
Jennifer Petersen	Keith and Ashley Thompson	
Dorothy Peterson	Ellen Thompson	
Barbara Peterson	Ted Thoms	
Mark and Holly Peterson	Steven and Mackenzie Tims	
Siri and Ed Pflipsen	Heather and Ryan Trasamar	

*Funds from these donors came from donor advised grants from the Sioux Falls Area Community Foundation.

WASHINGTON PAVILION MANAGEMENT, INC.
STATEMENTS OF FINANCIAL POSITION (ALL FUNDS)
Years Ended December 31, 2017 and 2016

	<u>2017</u>	<u>2016</u>
ASSETS		
Current Assets		
Cash and cash equivalents	\$ 2,236,173	\$ 2,146,286
Contributions receivable, net of allowance and discount	411,161	241,138
Accounts receivable, net of allowance	185,205	148,261
Inventory	43,803	52,402
Prepaid expenses	96,322	155,079
Deposits on exhibits and guest artists	5,475	33,600
	<u>2,978,139</u>	<u>2,776,766</u>
Total current assets		
Net Property and equipment	<u>252,107</u>	<u>242,266</u>
Other Assets		
Contributions receivable, net of allowance and discount	786,030	96,886
Beneficial interest in assets held by Community Foundation	276,738	251,102
Permanent collection	1,075,764	1,067,165
	<u>2,138,532</u>	<u>1,415,153</u>
Total other assets		
TOTAL ASSETS	<u>\$ 5,368,778</u>	<u>\$ 4,434,185</u>
LIABILITIES AND NET ASSETS		
Current Liabilities		
Accounts payable	\$ 229,759	\$ 251,372
Accrued expenses	331,048	366,466
Deferred revenue	1,650,158	2,096,714
	<u>2,210,965</u>	<u>2,714,552</u>
Total liabilities		
NET ASSETS		
Unrestricted	1,679,585	1,189,238
Temporarily Restricted	1,201,490	279,293
Permanently Restricted	276,738	251,102
	<u>3,157,813</u>	<u>1,719,633</u>
TOTAL NET ASSETS		
TOTAL LIABILITIES AND NET ASSETS	<u>\$ 5,368,778</u>	<u>\$ 4,434,185</u>

Audited Financial Statements are available upon request.

WASHINGTON PAVILION MANAGEMENT, INC.
STATEMENT OF ACTIVITIES
Years Ended December 31, 2017 and 2016

	Operating Fund	Other Funds	2017 All Funds	2016 All Funds
UNRESTRICTED NET ASSETS				
Public support				
City of Sioux Falls	\$ 1,706,895		\$ 1,706,895	\$ 1,645,950
Contributions	953,189	1,079,475	2,032,664	1,012,033
Donated goods and services	67,226	4,250	71,476	133,291
Special events (net of direct cost of \$45,554 and \$44,470)	115,120		115,120	120,269
Government grants	140,534	2,500	143,034	137,622
Private grants	43,916	10,500	54,416	221,652
Net assets released from restrictions	167,078	(167,078)	-	-
Total public support	3,193,958	929,647	4,123,605	3,270,817
Revenue and other				
Performance ticket income	3,741,428		3,741,428	2,405,265
Admissions	309,552		309,552	286,072
Sale of services	490,343		490,343	563,998
Facility rental	317,972		317,972	298,744
Membership dues	208,725		208,725	181,360
Retail Services (net of direct cost of \$245,039 and \$241,003)	671,361		671,361	609,480
Educational	323,841		323,841	319,355
Realized and unrealized gain (loss) on investments	-	25,636	25,636	5,121
Miscellaneous revenue	2,849	1,224	4,073	4,523
Total revenue and other	6,066,071	26,860	6,092,931	4,673,918
Total public support, revenue and other	9,260,029	956,507	10,216,536	7,944,735
Expenses				
Program services				
Visual Arts Center	566,898		566,898	622,977
Husby Performing Arts Center	4,048,744		4,048,744	2,936,670
Kirby Science Discovery Center	908,438		908,438	954,195
Community Engagement & Learning	683,122		683,122	761,077
Membership	66,662		66,662	54,435
Box Office and events	683,553		683,553	716,094
Retail Services	534,329		534,329	529,407
General and administrative	1,044,336		1,044,336	956,883
Fundraising	242,274		242,274	210,100
Total expenses	8,778,356	-	8,778,356	7,741,838
INCREASE (DECREASE) IN NET ASSETS	481,673	956,507	1,438,180	202,897
BOARD DESIGNATED FUND TRANSFER	(341,349)	341,349	-	-
NET ASSETS, BEGINNING OF YEAR	(123,351)	1,842,984	1,719,633	1,516,736
NET ASSETS, END OF YEAR	\$ 16,973	\$ 3,140,840	\$ 3,157,813	\$ 1,719,633



 WASHINGTON
PAVILION[®]

Experience **Your** Washington Pavilion